



## TABLE OF CONTENTS

<p>1. SPECIFICATIONS: 1-2</p> <ul style="list-style-type: none"> <li>- Technical Specifications ..... 1</li> <li>- Physical Specifications ..... 2</li> </ul> <p>2. ORDER LOGIC: 3</p> <p>3. CONNECTORS: 4-7</p> <ul style="list-style-type: none"> <li>- Seamless ..... 4</li> <li>- Submersible Seamless..... 5</li> <li>- Snap..... 6</li> <li>- Swivel..... 6</li> <li>- Barrel ..... 7</li> </ul>	<p>4. MOUNTING HARDWARE: 8-9</p> <ul style="list-style-type: none"> <li>- Standard ..... 8</li> <li>- Plastic ..... 8</li> <li>- Spring Clip ..... 9</li> <li>- Flexible ..... 9</li> </ul> <p>5. PACKAGING: 10</p> <p>6. TESTING: 10-12</p> <ul style="list-style-type: none"> <li>- Photometrics..... 10</li> <li>- Certifications ..... 11</li> <li>- Fixture Testing..... 11</li> <li>- Charts ..... 12-15</li> </ul>
--	---



**IMPACT LIGHTING INC.**

2101 West Central Blvd. Orlando, Florida 32805 USA • Phone: 1.800.507.5714 • Email: sales@impactlightinginc.com

[www.ImpactLightingInc.com](http://www.ImpactLightingInc.com)

**LIGHT DIMENSION: 0.45 X 1.14in (11.5 X 29mm)**

OUTPUT	RED/ AMBER/ ORANGE	GREEN/ BLUE/ WHITE	WHITE (CRI90)
LED Light	Epistar or Nichia SMD LED Chip		
Max Run Length*			
Single Feed	49.21ft (15m)	32.81ft (10m)	32.81ft (10m)
Double Feed	98.43ft (30m)	65.62ft (20m)	65.62ft (20m)
Light Surface	Round profile 270°		
Lumen Maintenance	70,000 Hours L70 @ 25°C : 90,000 L50 @ 25° 50,000 Hours L70 @ 50° : 70,000 Hours L50 @ 50°C		

**ELECTRICAL**

Input Voltage	24V DC		
Power Consumption	2.19W/ft (7.2W/m)	3.66W/ft (12W/m)	3.66W/ft (12W/m)

**PHYSICAL**

LED Count	122 LEDs / ft (72 LEDs/m)		
LED Spacing	0.55in (13.89mm)		
Cutting Unit Length	4.92in (125mm) (9 LEDs)	3.28in (83.3mm) (6 LEDs)	3.28in (83.3mm)(6 LEDs)
Thermal Management	Cool to the touch, free air convection		
Fixture Connections	Front, end & middle lead wires		
Minimum Bend Diameter	4.72in (120mm) (Top View Only)		

**TEMPERATURE RANGES**

Installation	32° to 140°F (0° to 60°C)		
Operating	-13° to 140°F (-25° to 60°C)		
Humidity	0-95% non condensing		

**DEPENDABILITY**

Warranty	Limited 3 Year PVC, Limited 5 Year Silicone		
----------	---	--	--

**SAFETY**

Certification	Tested to UL & CSA by Underwriters Laboratory for use in USA and Canada, complies with California Title 24 Requirements, Lighting Facts. Exceeds ANSI C78.377A, CE & RoHS Compliant.		
---------------	---	--	--

**IP RATING** IP68 with appropriately rated accessories

\*Max Run Length: Unless otherwise stated, snap and seamless run lengths are the same.

# TECHNICAL SPECIFICATIONS

## AVAILABLE COLORS:

Color	CCT Wavelength
Red	620-630nm
Green	520-530nm
Blue	465-475nm
Amber	585-595nm
Orange	600-610nm
Pink	630-645nm
2200K	2238 ± 102K
2500K	2460 ± 120K
2700K (WW)	2725 ± 145K
3000K	3045 ± 175K
3500K (W)	3465 ± 245K
4000K	3985 ± 275K
4500K (CW)	4503 ± 243K
5000K	5029 ± 283K
5700K (DW)	5669 ± 355K
6500K	6532 ± 510K

## LUMEN COUNT:

Color	Per Foot	Per Meter	Power			
Red	>42.67lm	>140lm	2.19W/ft (7.2W/m)			
Green	>85.34lm	>280lm	3.66W/ft (12W/m)			
Blue	>12.19lm	>40lm	3.66W/ft (12W/m)			
Amber	>42.67lm	>140lm	2.19W/ft (7.2W/m)			
Orange	>27.43lm	>90lm	2.19W/ft (7.2W/m)			
Pink	>45.72lm	>150lm	3.66W/ft (12W/m)			
2200K	>103.63lm	>340lm	3.66W/ft (12W/m)			
2500K	>103.63lm	>340lm	3.66W/ft (12W/m)			
2700K (WW)	>103.63lm	>340lm	3.66W/ft (12W/m)			
3000K	>103.63lm	>340lm	3.66W/ft (12W/m)			
3500K (W)	>115.82lm	>380lm	3.66W/ft (12W/m)			
4000K	>115.82lm	>380lm	3.66W/ft (12W/m)			
4500K (CW)	>115.82lm	>380lm	3.66W/ft (12W/m)			
5000K	>115.82lm	>380lm	3.66W/ft (12W/m)			
5700K (DW)	>115.82lm	>380lm </tr <tr> <td>6500K</td> <td>&gt;115.82lm</td> <td>&gt;380lm</td> <td>3.66W/ft (12W/m)</td> </tr>	6500K	>115.82lm	>380lm	3.66W/ft (12W/m)
6500K	>115.82lm	>380lm	3.66W/ft (12W/m)			

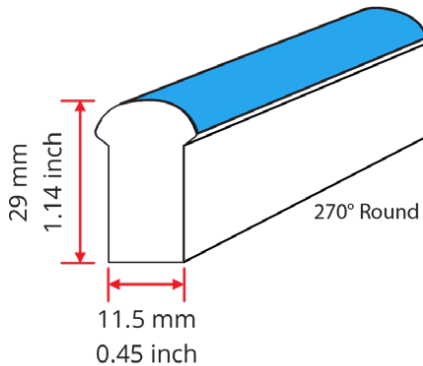
## COLOR JACKETS:

For standard or custom color jacket options please contact us. Minimum quantity order of 656ft. (200m) applies.

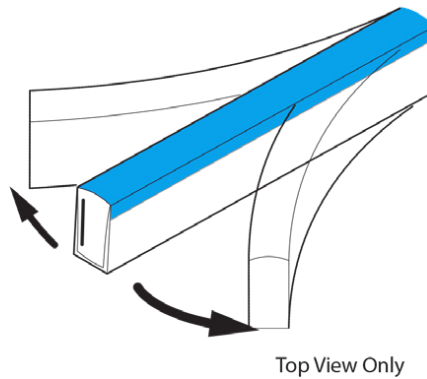
## PHYSICAL SPECIFICATIONS



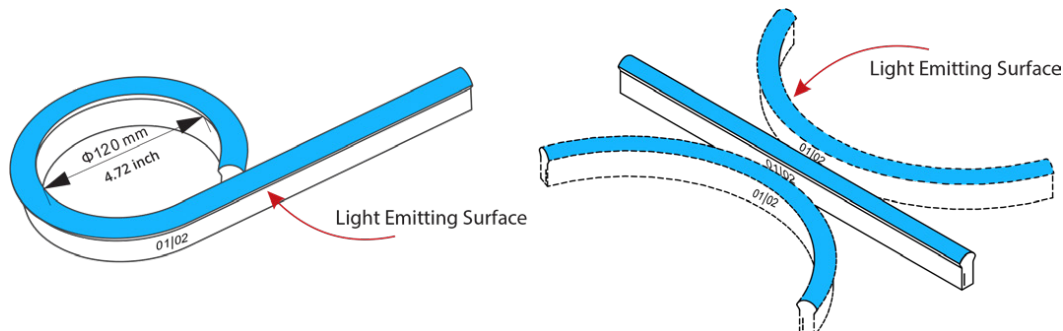
### LIGHT PROFILE



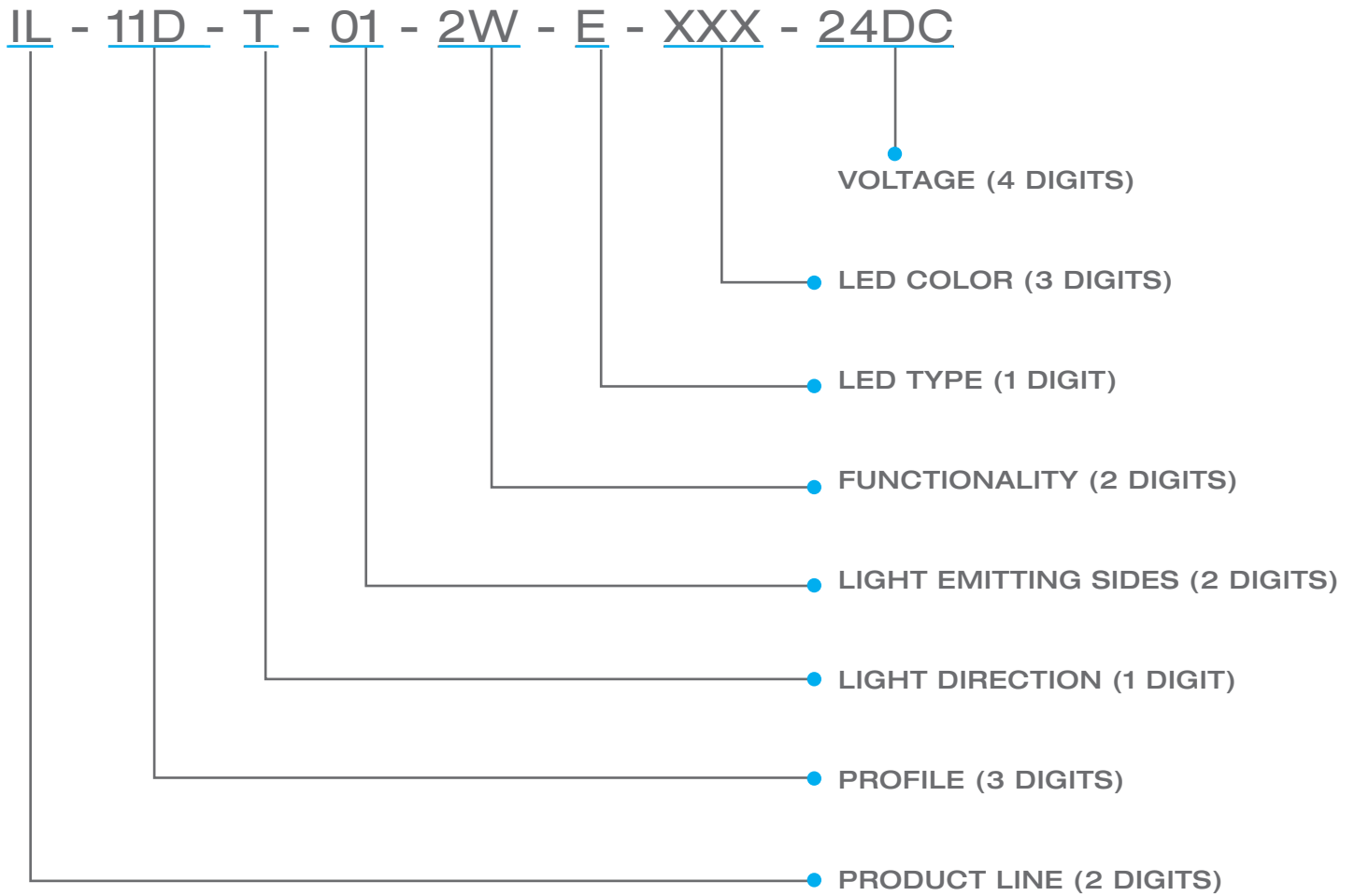
### LIGHT DIRECTION



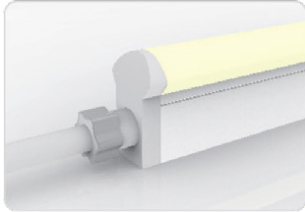
### MINIMUM BENDING DIAMETER



# ORDERING LOGIC

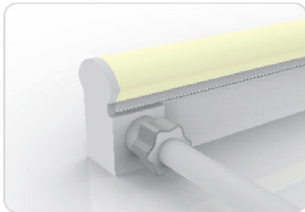
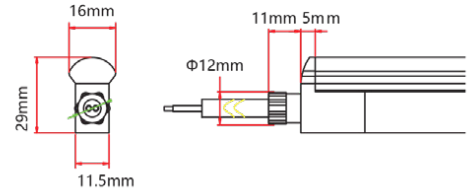


IP67: Rated for wet locations,  
not submersion.  
Factory Assembly Only.



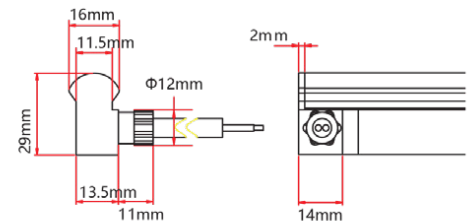
#### Seamless End Exit

IL-11D-T-01-2W-SE-0-EN-XXX-P



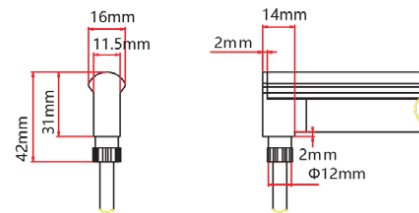
#### Seamless Side Exit

IL-11D-T-01-2W-SE-1-SR-XXX-P  
IL-11D-T-01-2W-SE-2-SL-XXX-P



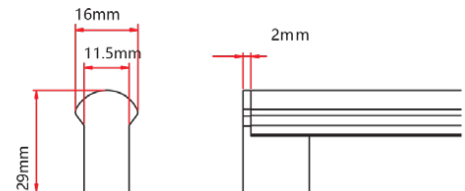
#### Seamless Bottom Exit

IL-11D-T-01-2W-SE-0-BO-XXX-P



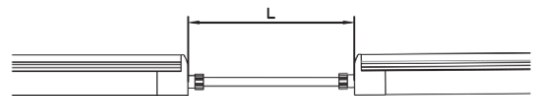
#### Seamless End Cap

IL-11D-T-01-0W-SE-0-EC



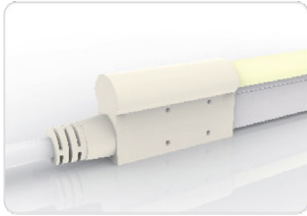
#### Seamless Jumper

IL-11D-T-01-2W-SE-0-EJ-XXX-P

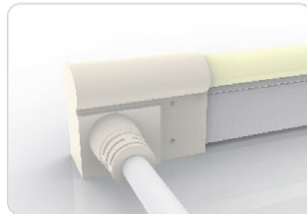
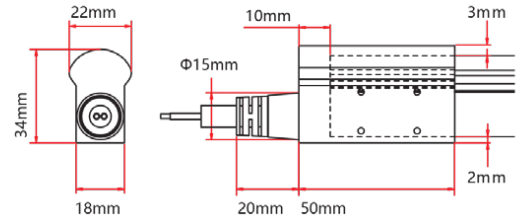


# 5 SUBMERSIBLE SEAMLESS CONNECTORS

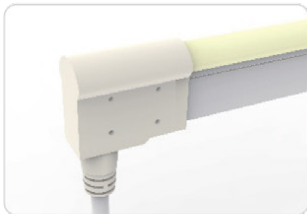
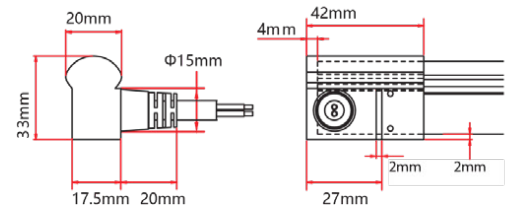
IP68: Submersible. Waiting on 3rd party certification from UL as of 18/04/12. Factory Assembly only.



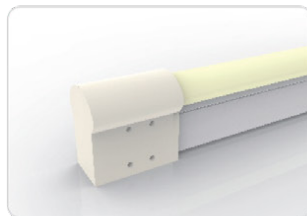
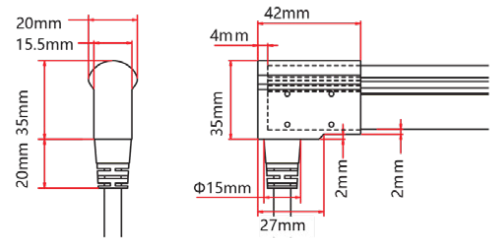
**Submersible End Exit**  
IL-11D-T-01-2W-SU-0-EN-XXX-P



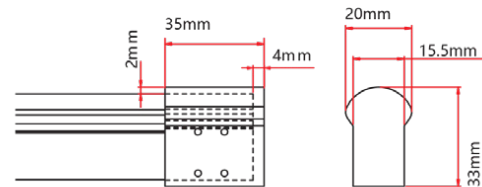
**Submersible Side Exit**  
IL-11D-T-01-2W-SU-1-SR-XXX-P  
IL-11D-T-01-2W-SU-2-SL-XXX-P



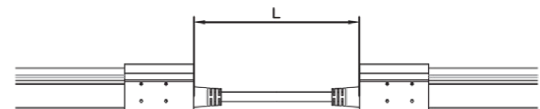
**Submersible Bottom Exit**  
IL-11D-T-01-2W-SU-0-BO-XXX-P



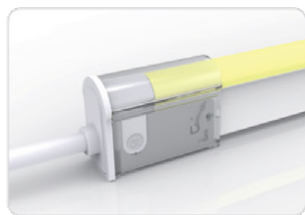
**Submersible End Cap**  
IL-11D-T-01-0W-SU-0-EC



**Submersible Jumper**  
IL-11D-T-01-2W-SU-0-EJ-XXX-P

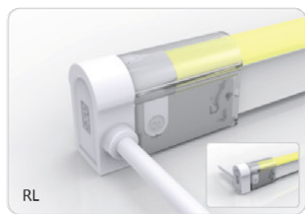
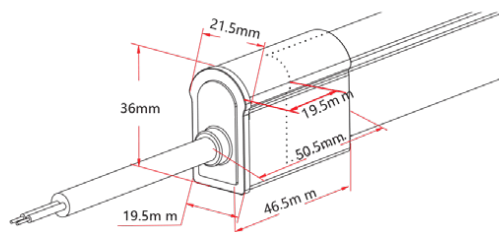


IP67: Rated for outdoor use.  
Factory Assembly or DIY.



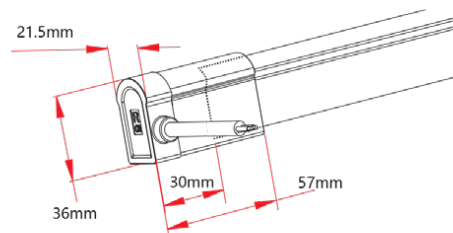
### Snap End Exit

IL-11D-T-01-2W-SC-1-EN-XXX-P  
IL-11D-T-01-2W-SC-2-EN-XXX-P



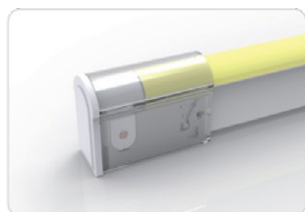
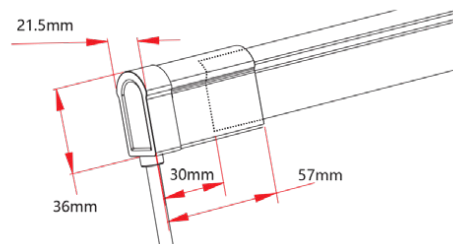
### Snap Side Exit

IL-11D-T-01-2W-SC-1-SL-XXX-P  
IL-11D-T-01-2W-SC-2-SL-XXX-P  
IL-11D-T-01-2W-SC-1-SR-XXX-P  
IL-11D-T-01-2W-SC-2-SR-XXX-P



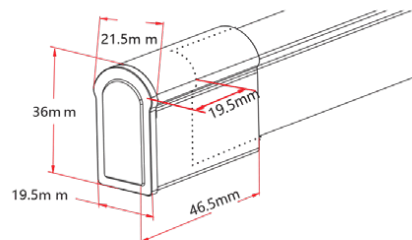
### Snap Bottom Exit

IL-11D-T-01-2W-SC-1-BO-XXX-P  
IL-11D-T-01-2W-SC-2-BO-XXX-P



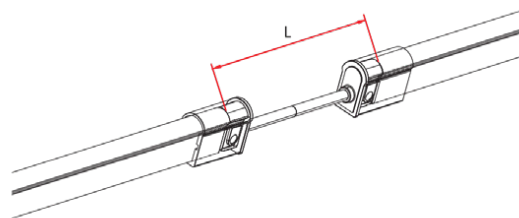
### Snap End Cap

IL-11D-T-01-0W-SC-1-EC  
IL-11D-T-01-0W-SC-2-EC



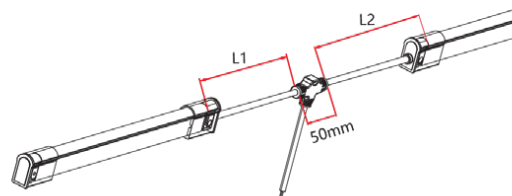
### Snap Jumper

IL-11D-T-01-2W-SC-0-EJ-XXX-P



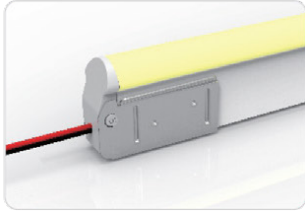
### Snap Power T Feed

IL-11D-T-01-2W-SC-0-TF-XXX-P



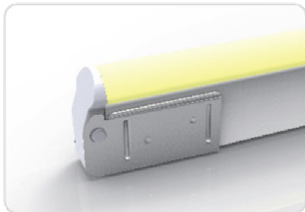
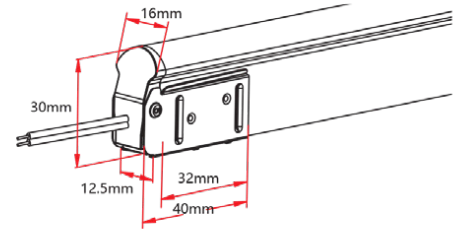
# SWIVEL CONNECTORS

IP20: Rated for indoor use only.  
Factory Assembly only.



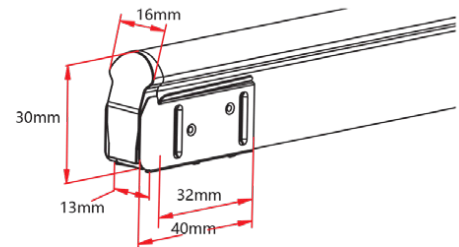
## Swivel End Exit

IL-11D-T-01-2W-SV-1-EN-XXX-P  
IL-11D-T-01-2W-SV-2-EN-XXX-P



## Swivel End Cap

IL-11D-T-01-0W-SV-0-EC

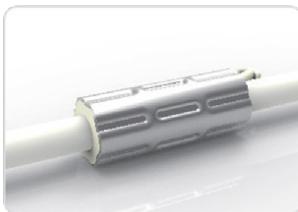
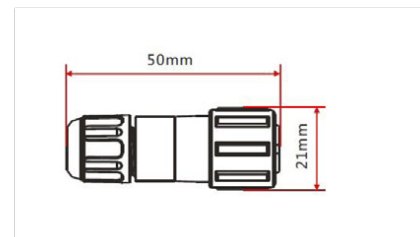


# BARREL CONNECTORS

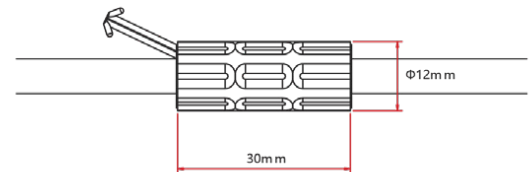


## Barrel Connectors

IL-XX-BC-DC-CXX-F  
IL-XX-BC-DC-CXX-M  
IL-XX-BN-XXA-CXX-F  
IL-XX-BN-XXA-CXX-M  
IL-XX-PL-XXA-CXX-F  
IL-XX-PL-XXA-CXX-M



## Anti-Wicking Ferrule



## Anvil Cutter

Optional accessory for on-site cutting.

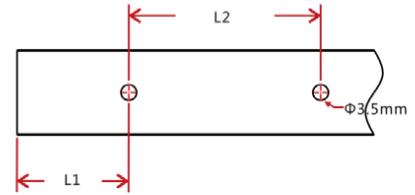
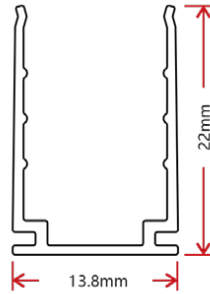
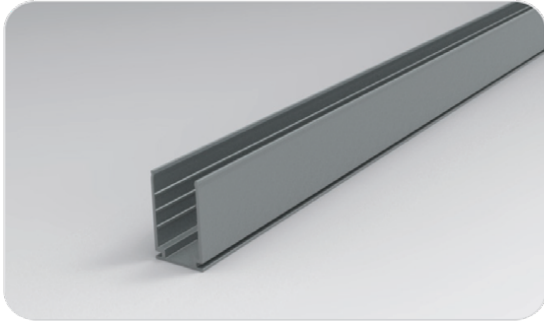
\*Factory order only\*



# MOUNTING HARDWARE

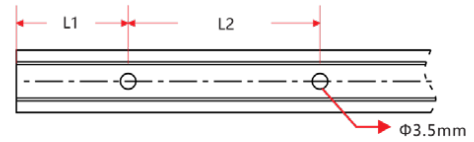
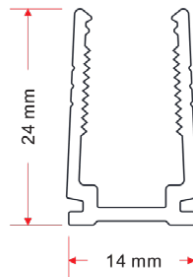
## STANDARD ANODIZED ALUMINUM TRACK

### STANDARD TRACK



W x H	Standard Length	Part Number	L1	L2	Screw Hole $\Phi$	Hole #
0.54 x 0.87in (13.8 x 22mm)	1.38in (35mm)	TL-11-R-AL-3C5-SD	0.69in (17.5mm)	/	$\Phi$ 0.14in (3.5mm)	1
	19.69in (500mm)	TR-11-R-AL-0M5-SD	1.97in (50mm)	7.87in (200mm)	$\Phi$ 0.14in (3.5mm)	3
	39.37in (1000mm)	TR-11-R-AL-01M-SD	3.94in (100mm)	7.87in (200mm)	$\Phi$ 0.14in (3.5mm)	5
	78.74in (2000mm)	TR-11-R-AL-02M-SD	3.94in (100mm)	7.87in (200mm)	$\Phi$ 0.14in (3.5mm)	10

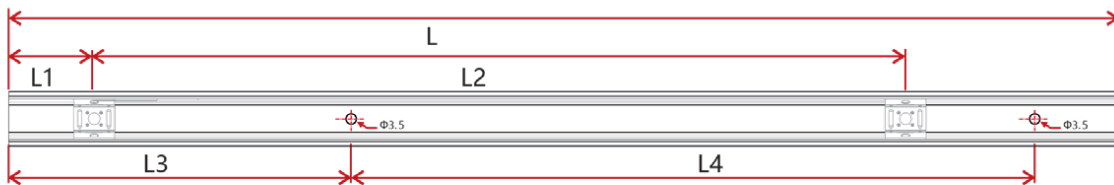
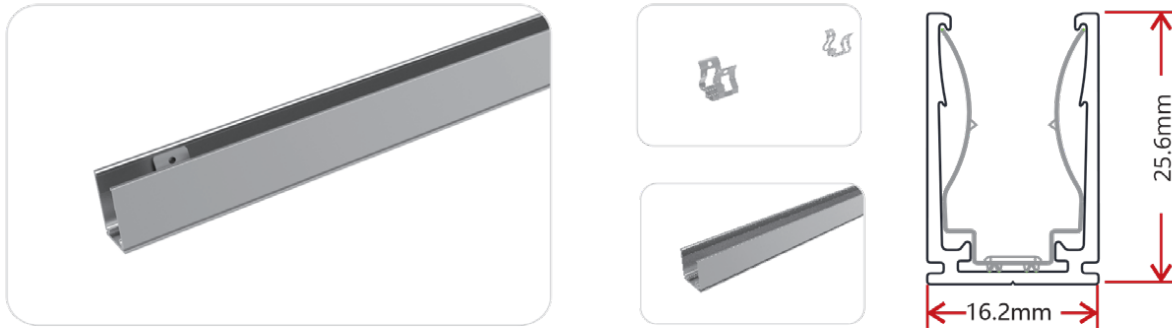
### PLASTIC TRACK



W x H	Standard Length	Part Number	L1	L2	Screw Hole $\Phi$	Hole #
0.55 x 0.94in (14 x 24mm)	19.69in (500mm)	TR-11-R-PL-0M5-SD	1.97in (50mm)	7.87in (200mm)	$\Phi$ 0.14in (3.5mm)	3
	39.37in (1000mm)	TR-11-R-PL-01M-SD	3.94in (100mm)	7.87in (200mm)	$\Phi$ 0.14in (3.5mm)	5
	78.74in (2000mm)	TR-11-R-PL-02M-SD	3.94in (100mm)	7.87in (200mm)	$\Phi$ 0.14in (3.5mm)	10

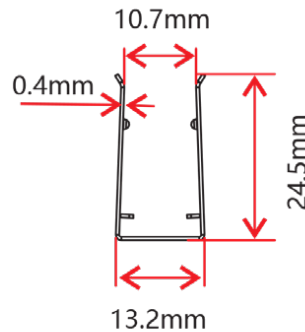
# MOUNTING HARDWARE

## SPRING CLIP ANODIZED ALUMINUM TRACK

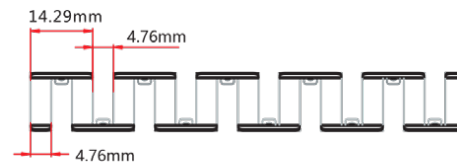
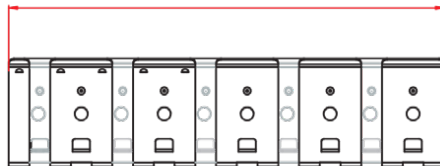


W x H	Standard Length	Part Number	L1	L2	L3	L4	Screw Hole $\Phi$	Hole #	Clip #
0.64 x 1.01in (16.2 x 25.6mm)	1.38in (35mm)	TL-11-R-AL-3CS-SP	0.69in (17.5mm)	/	0.2in (5mm)	0.98in (25mm)	$\Phi 0.14$ in (3.5mm)	2	1
	19.69in (500mm)	TR-11-R-AL-0M5-SP	0.98in (25mm)	8.86in (225mm)	1.97in (50mm)	7.87in (200mm)	$\Phi 0.14$ in (3.5mm)	3	3
	39.37in (1000mm)	TR-11-R-AL-01M-SP	0.98in (25mm)	9.35in (237.5mm)	3.94in (100mm)	7.87in (200mm)	$\Phi 0.14$ in (3.5mm)	5	5
	78.74in (2000mm)	TR-11-R-AL-02M-SP	0.98in (25mm)	9.6in (243.8mm)	3.94in (100mm)	7.87in (200mm)	$\Phi 0.14$ in (3.5mm)	10	9

## STAINLESS STEEL FLEXIBLE TRACK



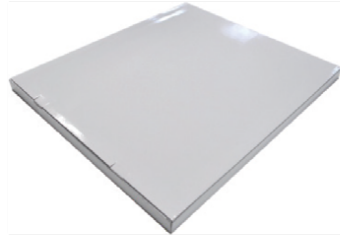
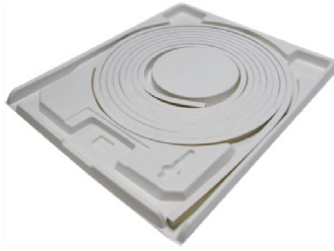
100/300/500/900mm



W x H	Standard Length	Part Number
0.52 x 0.97in (13.2 x 24.5mm)	3.94in (100mm)	TR-11-F-SS-0M1-SD
	11.81in (300mm)	TR-11-F-SS-0M3-SD
	19.69in (500mm)	TR-11-F-SS-0M5-SD
	35.43in (900mm)	TR-11-F-SS-0M9-SD

This profile can be mounted using screws in any gaps where the channel bends.

# PACKAGING



White Box

Packing Box

Fixture Length	White Box Dimensions	Packing Box Dimensions	# Of White Boxes	Package Weight
196.85in (5m)	15.35x2.05x19.67in (39x5.2x50cm)	20.47x16.14x11.02in (52x41x28cm)	5	30.86lbs (14kg)
393.7in (10m)	20.08x2.05x24.41in (51x5.2x62cm)	25.2x20.87x11.02in (64x53x28cm)	5	57.32lbs (26kg)
393.7in (10m)	20.08x2.05x24.41in (51x5.2x62cm)	25.2x20.87x6.9in (64x53x17.5cm)	3	35.27lbs (16kg)
787.4in (20m)	26.77x2.05x31.1in (68x5.2x79cm)	31.9x27.56x4.92in (81x70x12.5cm)	2	48.5lbs (22kg)

## TESTING

### Photometric Data

LED Type	Red/Amber		Green/Blue/White			White (CRI90)	
	Beam Angle	320°	Color	CCT	Lumen/m	CCT	Lumen/m
Beam Angle	320°		Color	CCT	Lumen/m	CCT	Lumen/m
Color	Wavelength	Lumen/m	Color	CCT	Lumen/m	CCT	Lumen/m
Red	620-630nm	>140lm	2500K	2460±120K	>340lm	2460±120K	>300lm
Green	520-530nm	>280lm	2700K	2725±145K	>340lm	2725±145K	>300lm
Blue	465-475nm	>40lm	3000K	3045±175K	>340lm	3045±175K	>300lm
Amber	585-595nm	>140lm	3500K	3465±245K	>380lm	3465±245K	>340lm
Orange	585-595nm	>90lm	4000K	3985±275K	>380lm	3985±275K	>340lm
Pink	630-645nm	>150lm	4500K	4503±243K	>380lm	4503±243K	>340lm
			5000K	5029±283K	>380lm	5028±283K	>340lm
			5700K	5669±355K	>380lm		
			6500K	6532±510K	>380lm		

## CERTIFICATIONS

	Testing Organization	Certificate Serial N°	Report Reference
UL 2108	UL	20160726-E360029	E360029-2013
CE-EMC	SGS	SZEM1702001259LMV	SZEM160600421302

## FIXTURE TESTING

### OPTICAL TESTING

Spectrum Analysis	IES LM 79 (Lumen, CCT, CRI, XY, SDCM, wavelength)
Photometric Distribution	IES LM 73 (lumen intensity distribution & Lux diagram)
Lumen Maintenance & Lifetime	IES LM84 & IES TM28

### TEMPERATURE TESTING

Normal Temperature Test	UL1598& UL2388 & IEC60598-1 & IEC60598-2-21
Abnormal Operation Test	UL1598 & UL2388 & IEC60598-1 & IEC60598-2-21

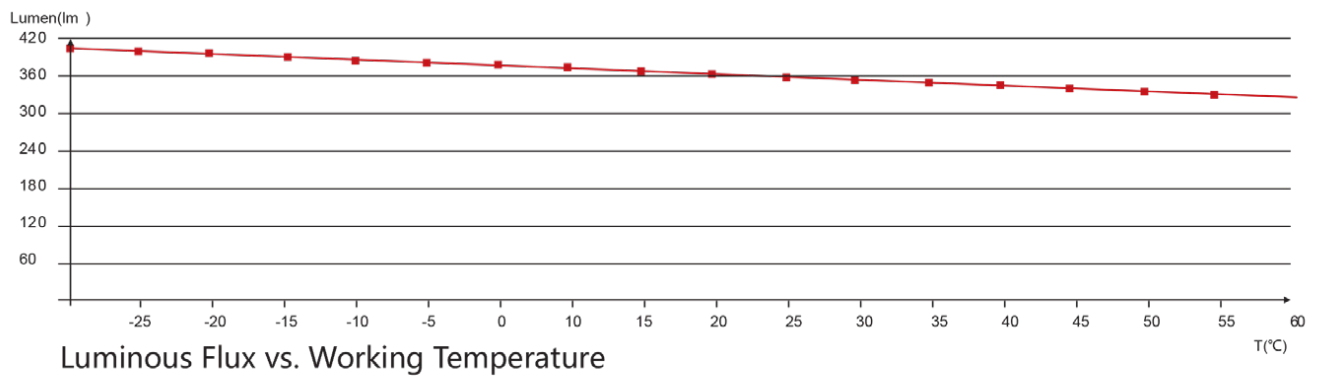
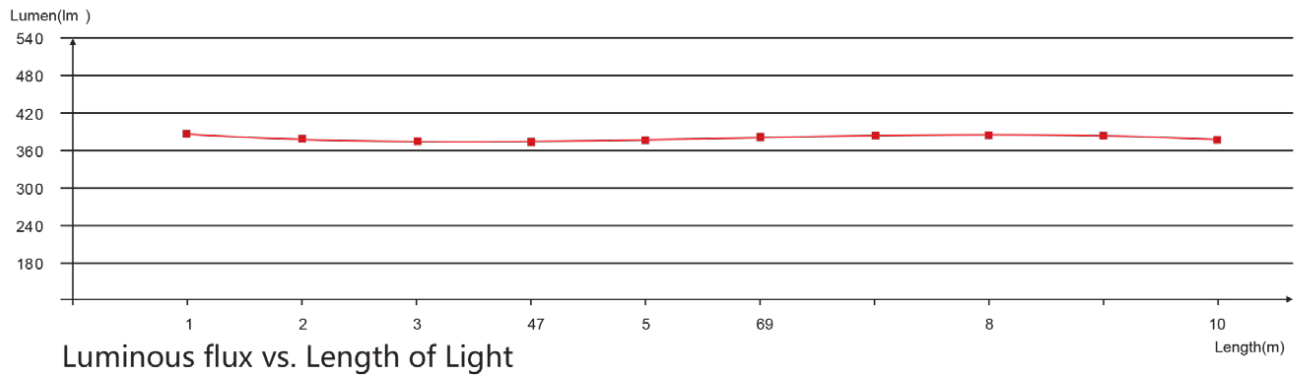
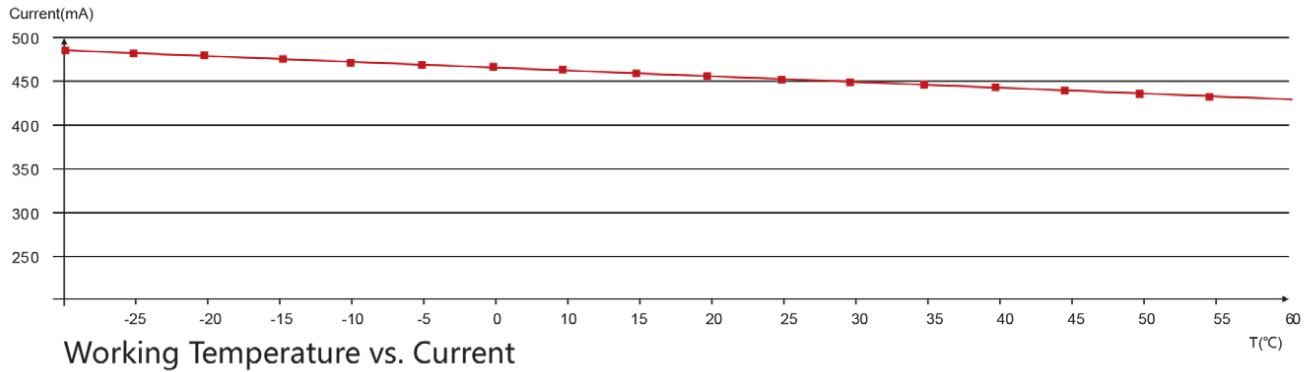
### DURABILITY TESTING

Bending Test	Manufacturer-defined, 500 cycles
Swing Test	UL2388, >750 cycles
Tensile Test	Manufacturer-defined, > the weight of light in max. connection length double feed
Twist Test	Max connection length double feed Manufacturer-defined, >200 cycles
Ball Impact	UL1598 & UL2388 & IEC60598-1 & IEC60598-2-21
IK07 IK08	IEC62262

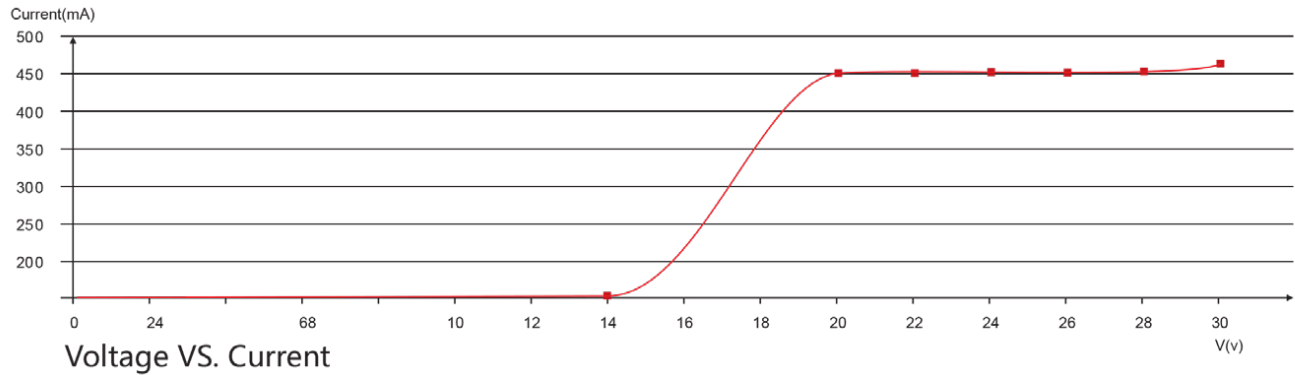
### ENVIRONMENTAL TESTING

Chlorinated Water Immersion	BG9667, PH6.8-7.6, free chlorine 0.3-0.6mg/L
Salt Water Immersion	IEC60598-1, Salinity 4%
Salt Spray Test	IEC68-2-11
Outdoor Exposure	Manufacturer-defined
Flame Resistance	UL94
UV Exposure	ASTMG 154, ISO 4892-3, UVA@340nm
IPX5 IPX6 IPX7 IPX8	IEC60529
Temperature Shock	Manufacturer-defined, -40°C-60°C (typical temperature range)
Constant Temperature	Manufacturer-defined

## CHARTS



## CHARTS



## ANSI STANDARD

## Nominal CCT Categories

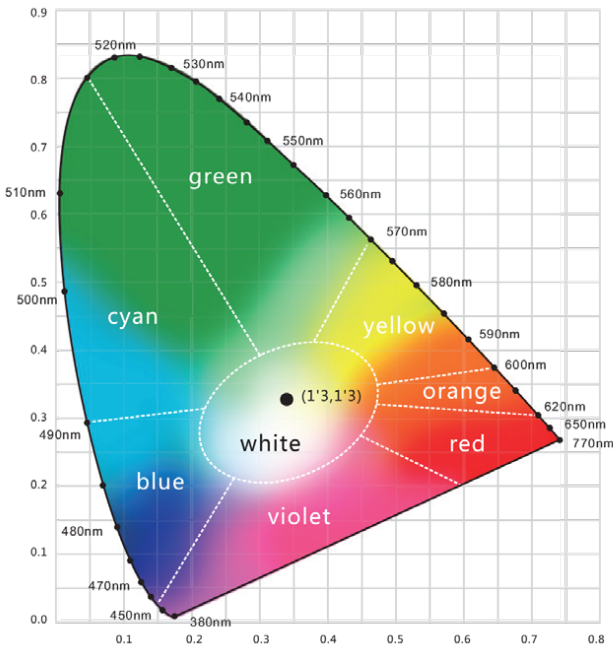
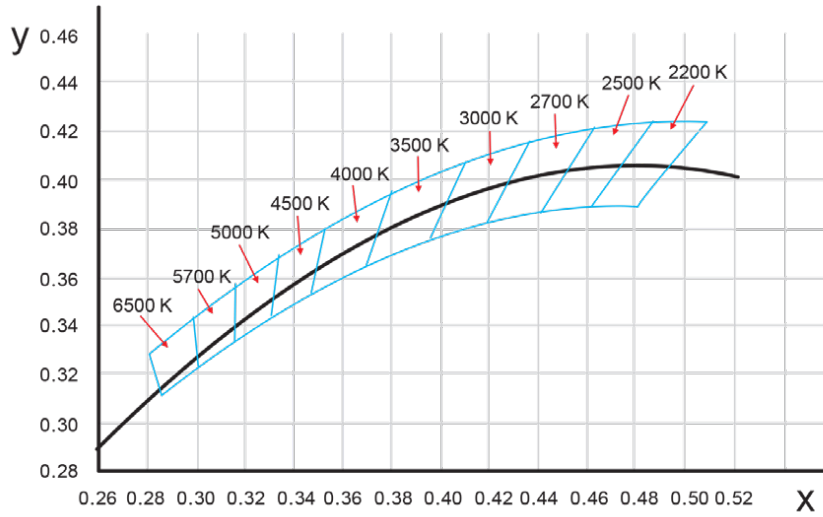
Nominal CCT	Target CCT and tolerance(K)	Target $D_{uv}$	$D_{uv}$ Tolerance Range
2200K	2238 ±102	0.0000	$T_x$ : CCT of the source
2500K	2460 ±120	0.0000	For $T_x < 2870K$
2700K	2725 ±145	0.0000	0.000 ± 0.0060
3000K	3045 ±175	0.0001	For $T_x \geq 2870K$
3500K	3465 ±245	0.0005	$D_{uv}(T_x) \pm 0.0060$
4000K	3985 ±275	0.0010	where
4500K	4503 ±243	0.0015	$D_{uv}(T_x) = 57700 \times (1/T_x)^2$
5000K	5029 ±283	0.0020	-44.6 × (1/ $T_x$ )
5700K	5667 ±355	0.0025	+0.00854
6500K	6532 ±510	0.0031	
Flexible CCT (2200-6500K)	$T_f^{1)} \pm \Delta T^{2)}$	$D_{uv} T_f^{3)}$	

## Remark:

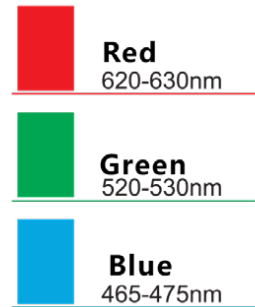
- 1)  $T_f$  is chosen to be at 100K steps (2300, 2400, ..., 6400K), excluding the ten nominal CCTs listed in Table 1.
- 2)  $\Delta T = 1.1900 \times 10^5 \times T_f^{-3} - 1.5434 \times 10^4 \times T_f^{-2} + 0.7168 \times T_f - 902.55$
- 3) Same as in the  $D_{uv}$  Tolerance Range.

## CHARTS

### (X,Y) Chromaticity Diagram



### Light Color



# 15 TESTING

## LOADING CHART

Rated Power	35W	60W	75W	80W	100W	120W	150W	185W	240W	320W
2.19W/ft (7.2W/m)	9.84ft (3m)	19.69ft (6m)	24.61ft (7.5m)	26.25ft (8m)	32.81ft (10m)	39.37ft (12m)	49.21ft (15m)	59.06ft (18m)	78.74ft (24m)	98.43ft (30m)
3.66W/ft (12W/m)	6.56ft (2m)	11.48ft (3.5m)	14.76ft (4.5m)	16.4ft (5m)	19.69ft (6m)	22.97ft (7m)	32.81ft (10m)	39.37ft (12m)	45.93ft (14m)	65.62ft (20m)
Lead Type	Single Feed						Double Feed			

Note: These are the max recommended run lengths based on power supply

**For example:** It is recommended to use one 80W power supply for a single-fed run of 26.25ft (8m) at 2.19W/ft (7.2W/m), or for a single-fed run of 16.4ft (5m) at 3.66W/ft (12W/m).