

TABLE OF CONTENTS

1. SPECIFICATIONS: 1-2	4. MOUNTING HARDWARE: 8-9
- Technical Specifications 1	- Standard 8
- Physical Specifications 2	- Plastic 8
	- Spring Clip 9
	- Flexible 9
2. ORDER LOGIC: 3	
	5. PACKAGING: 10
3. CONNECTORS: 4-7	6. TESTING: 10-12
- Seamless 4	- Photometrics 10
- Submersible Seamless 5	- Certifications 11
- Snap 6	- Fixture Testing 11
- Barrel 7	- Charts 12-13



IMPACT LIGHTING INC.

2101 West Central Blvd. Orlando, Florida 32805 USA • Phone: 1.800.507.5714 • Email: sales@impactlightinginc.com

www.ImpactLightingInc.com

LIGHT DIMENSION: 0.45 X 1.14in (11.5 X 29mm)

OUTPUT	RGB	SINGLE COLOR	RGBW	W+WW
LED Light	Epistar SMD LED Chip			
Max Run Length *1 *2				
Single Feed (Dynamic)	49.21ft (15m)	49.21ft (15m)	32.81ft (10m)	49.21ft (15m)
Single Feed (Full Load)	32.81ft (10m)	32.81ft (10m)	16.4ft (5m)	32.81ft (10m)
Double Feed (Dynamic)	98.43ft (30m)	98.43ft (30m)	65.62ft (20m)	98.43ft (30m)
Double Feed (Full Load)	65.62ft (20m)	65.62ft (20m)	32.81ft (10m)	65.62ft (20m)
Light Surface	Round profile 270°			
Lumen Maintenance	70,000 Hours L70 @ 25°C : 90,000 L50 @ 25° 50,000 Hours L70 @ 50° : 70,000 Hours L50 @ 50°C			

ELECTRICAL

Input Voltage	24V DC			
Power Consumption	3.66W/ft. (12W/m)	3.66W/ft. (12W/m)	4.57W/ft (15W/m)	3.66W/ft (12W/m)

PHYSICAL

LED Count	17 LED/ft (56LEDs/m)	17 LED/ft (56LEDs/m)	17 LED/ft (56LEDs/m)	18 + 18 LEDs/ft (60+60LEDs/m)
LED Spacing	0.7in (17.8mm)	0.7in (17.8mm)	0.7in (17.8mm)	0.66in (16.7mm)
Cutting Unit Length	4.92in (125mm) (7 LEDs)	4.92in (125mm) (7 LEDs)	4.92in (125mm) (7 LEDs)	3.94in (100mm) (6+6 LEDs)
IC Type	UCS2903	UCS2903	UCS2904	UCS2903
Thermal Management	Cool to the touch, free air convection			
Fixture Connections	Front, end & middle lead wires			
Minimum Bend Diameter	4.72in (120mm) (Top View Only)			

TEMPERATURE RANGES

Installation	32° to 140°F (0° to 60°C)
Operating	-13° to 140°F (-25° to 60°C)
Humidity	0-95% non condensing

DEPENDABILITY

Warranty	Limited 3 Year PVC, Limited 5 Year Silicone
----------	---

SAFETY

Certification	Tested to UL & CSA by Underwriters Laboratory for use in USA and Canada, complies with California Title 24 Requirements, Lighting Facts. Exceeds ANSI C78.377A, CE & RoHS Compliant.
---------------	---

IP RATING	IP68 with appropriately rated accessories
------------------	--

*1 Max Run Length: Dynamic = when the R, G, B channels are not operating at 100%
Full Load = when the R, G, B channels are operating at 100%

*2 Max Run Length: Unless otherwise stated, snap and seamless run lengths are the same.

TECHNICAL SPECIFICATIONS

AVAILABLE COLORS:

COLOR	CT WAVELENGTH
Red	620-630nm
Green	520-530nm
Blue	465-475nm
Amber	585-595nm
2700K (WW)	2725 ± 145K
3000K	3045 ± 175K
3500K (W)	3465 ± 245K
4000K	3985 ± 275K
4000K (CW)	4503 ± 243K
5000K	5029 ± 283K
5700K (DW)	5669 ± 355K
6500K	6532 ± 510K

LUMEN COUNT:

COLOR	PER FOOT	PER METER	POWER
Red	>6.71lm	>22lm	1.37W/ft (4.5W/m)
Green	>27.43lm	>90lm	1.37W/ft (4.5W/m)
Blue	>5.49lm	>18lm	1.37W/ft (4.5W/m)
R+G+B (white)	>39.62lm	>130lm	3.66W/ft (12W/m)

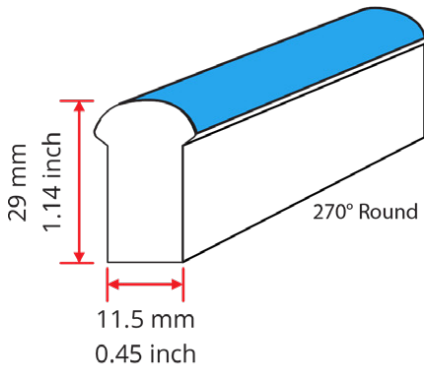
COLOR JACKETS:

For standard or custom color jacket options please contact us. Minimum quantity order of 656ft. (200m) applies.

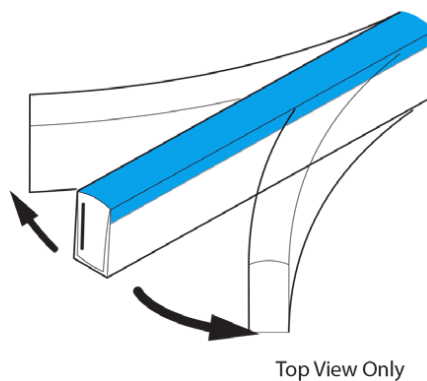
PHYSICAL SPECIFICATIONS



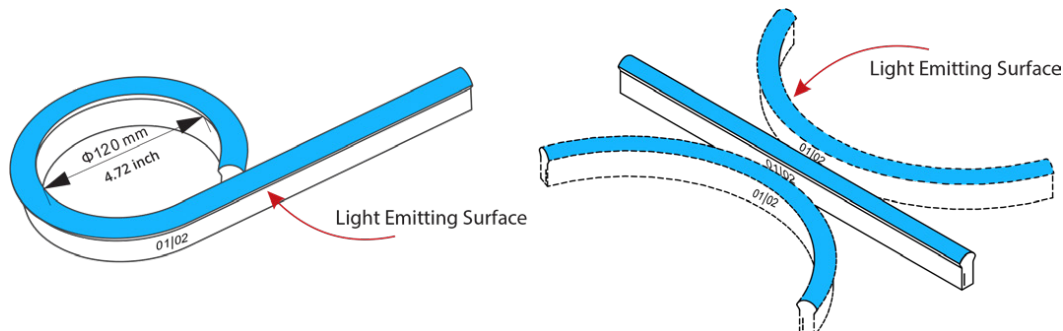
LIGHT PROFILE



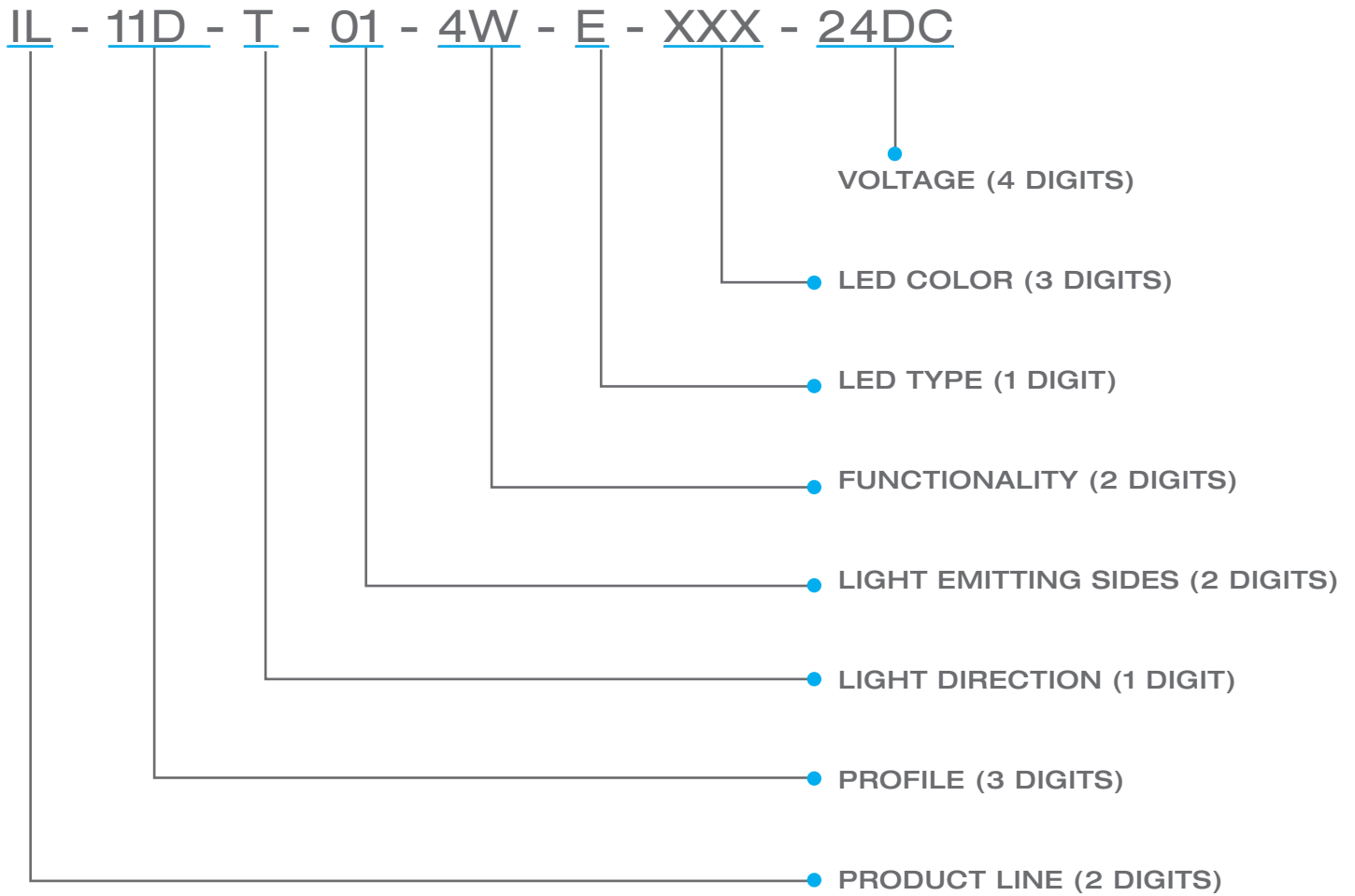
LIGHT DIRECTION



MINIMUM BENDING DIAMETER

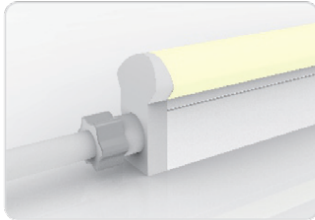


ORDERING LOGIC



IP67: Rated for wet locations,
not submersion.

Factory Assembly Only.

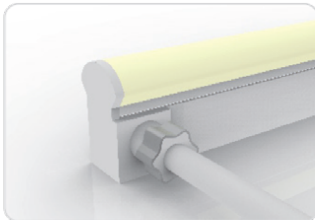
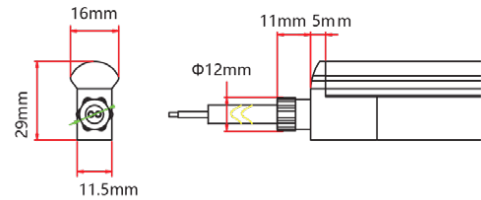


Seamless End Exit

IL-11D-T-01-3W-SE-0-EN-XXX-S

2 Wire

IL-11D-T-01-3W-SE-0-EN-XXX-P



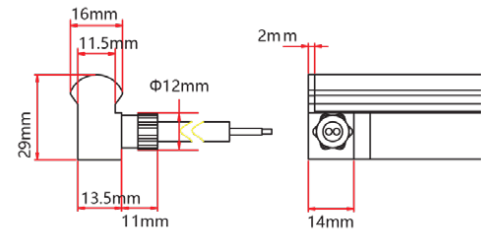
Seamless Side Exit

IL-11D-T-01-3W-SE-1-SR-XXX-S

IL-11D-T-01-3W-SE-2-SL-XXX-S

2 Wire

IL-11D-T-01-3W-SE-2-SL-XXX-P

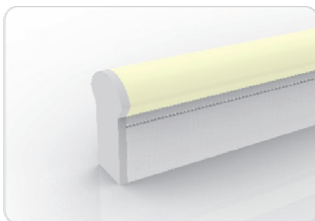
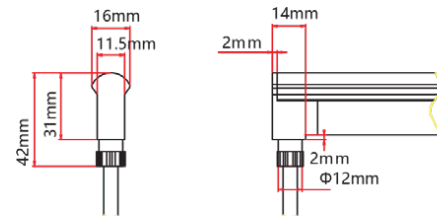


Seamless Bottom Exit

IL-11D-T-01-3W-SE-0-BO-XXX-S

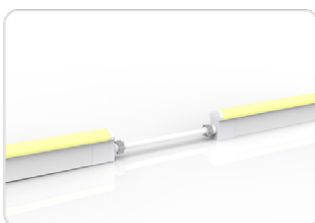
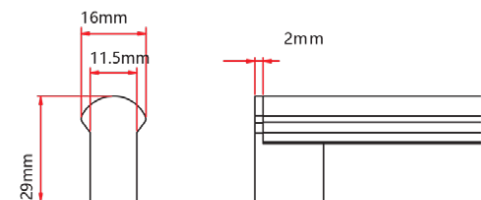
2 Wire

IL-11D-T-01-3W-SE-0-BO-XXX-P



Seamless End Cap

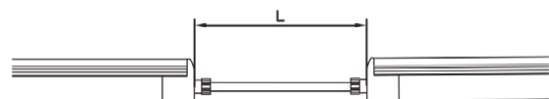
IL-11D-T-01-0W-SE-0-EC



Seamless Jumper

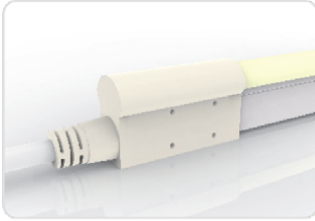
IL-11D-T-01-3W-SE-0-EJ-XXX-S

IL-11D-S-01-3W-SE-0-BJ-XXX-S



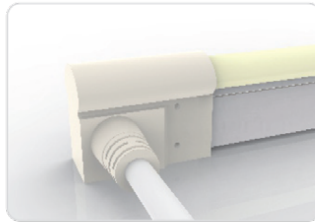
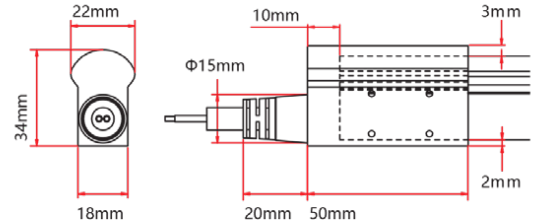
5 SUBMERSIBLE SEAMLESS CONNECTORS

IP68: Submersible. Waiting on 3rd party certification from UL as of 18/04/12. Factory Assembly only.



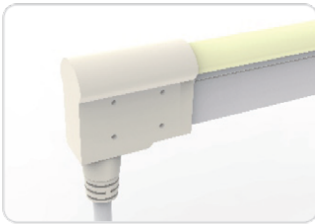
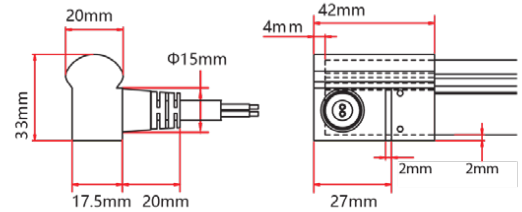
Submersible End Exit

IL-11D-T-01-3W-SU-0-EN-XXX-S



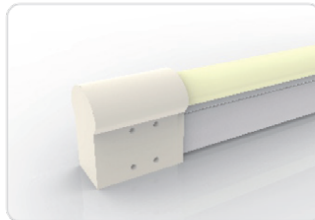
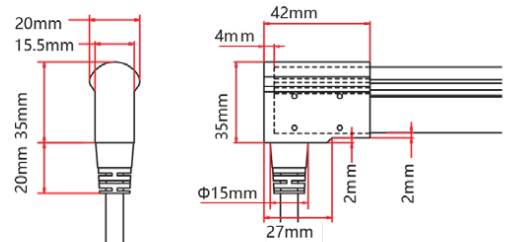
Submersible Side Exit

IL-11D-T-01-3W-SU-1-SR-XXX-S
IL-11D-T-01-3W-SU-2-SL-XXX-S



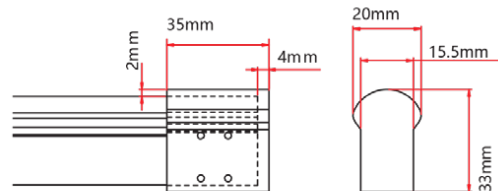
Submersible Bottom Exit

IL-11D-T-01-3W-SU-0-BO-XXX-S



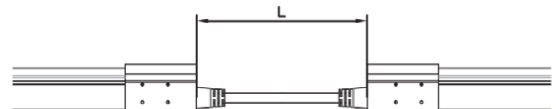
Submersible End Cap

IL-11D-T-01-0W-SU-0-EC

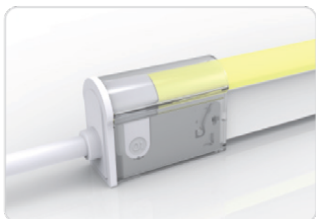


Submersible Jumper

IL-11D-T-01-3W-SU-0-EJ-XXX-S



IP67: Rated for outdoor use.
Factory Assembly or DIY.

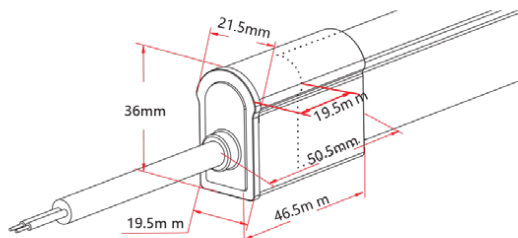


Snap End Exit

IL-11D-T-01-3W-SC-1-EN-XXX-S
IL-11D-T-01-3W-SC-2-EN-XXX-S

2 Wire

IL-11D-T-01-3W-SC-2-EN-XXX-P

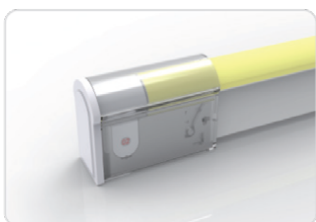
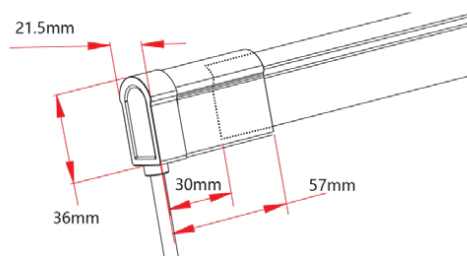


Snap Bottom Exit

IL-11D-T-01-3W-SC-1-BO-XXX-S
IL-11D-T-01-3W-SC-2-BO-XXX-S

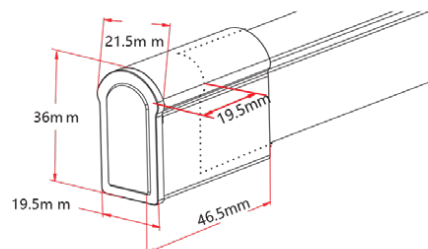
2 Wire

IL-11D-T-01-3W-SC-2-BO-XXX-P



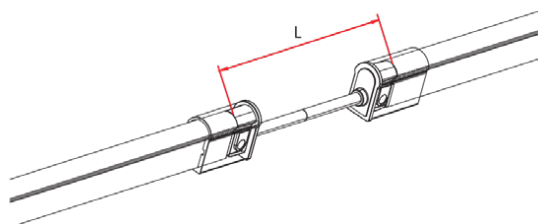
Snap End Cap

IL-11D-T-01-0W-SC-1-EC
IL-11D-T-01-0W-SC-2-EC



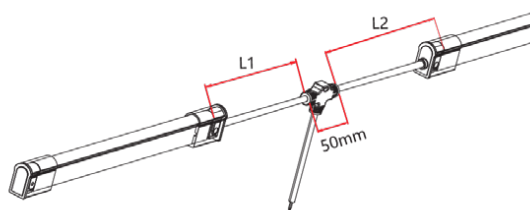
Snap Jumper

IL-11D-T-01-3W-SC-0-EJ-XXX-S



Snap Power T Feed

IL-11D-T-01-3W-SC-0-TF-XXX-S

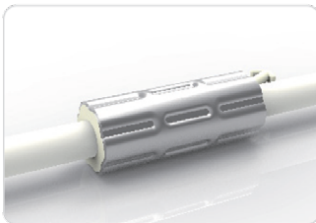
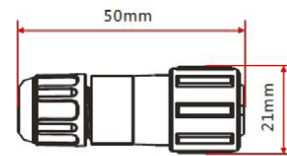


IP20: Rated for indoor use only.
Factory Assembly only.

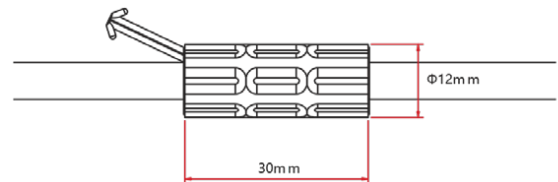


Barrel Connectors

IL-XX-BC-DC-CXX-F
IL-XX-BC-DC-CXX-M
IL-XX-BN-XXA-CXX-F
IL-XX-BN-XXA-CXX-M
IL-XX-PL-XXA-CXX-F
IL-XX-PL-XXA-CXX-M



Anti-Wicking Ferrule



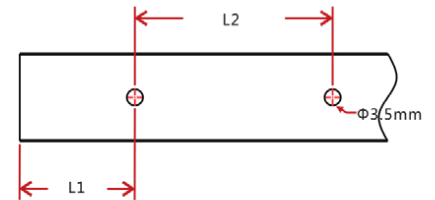
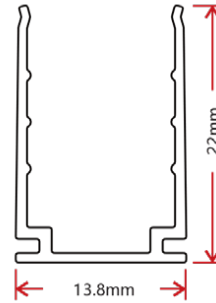
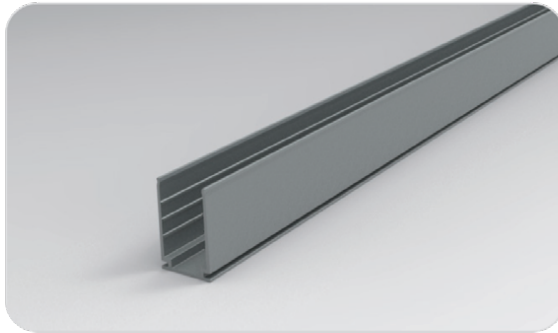
Anvil Cutter

Optional accessory for on-site cutting.

Factory order only

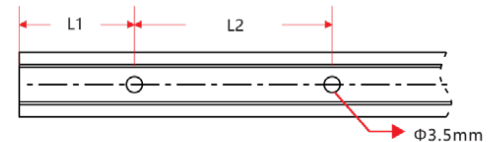
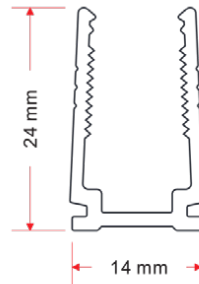
MOUNTING HARDWARE

LOCKING ANODIZED ALUMINUM TRACK



W x H	Standard Length	Part Number	L1	L2	Screw Hole Φ	Hole #
0.54 x 0.87in (13.8 x 22mm)	1.38in (35mm)	TL-11-R-AL-3C5-SD	0.69in (17.5mm)	/	Φ 0.14in (3.5mm)	1
	19.69in (500mm)	TR-11-R-AL-0M5-SD	1.97in (50mm)	7.87in (200mm)	Φ 0.14in (3.5mm)	3
	39.37in (1000mm)	TR-11-R-AL-01M-SD	3.94in (100mm)	7.87in (200mm)	Φ 0.14in (3.5mm)	5
	78.74in (2000mm)	TR-11-R-AL-02M-SD	3.94in (100mm)	7.87in (200mm)	Φ 0.14in (3.5mm)	10

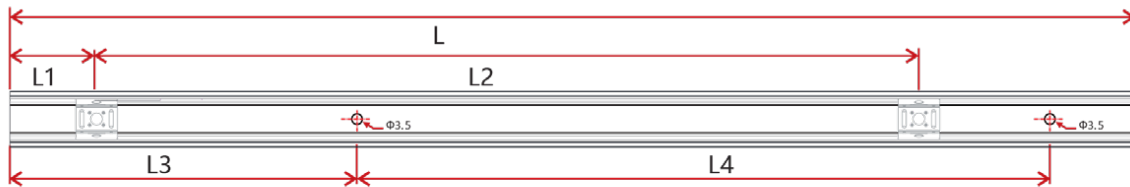
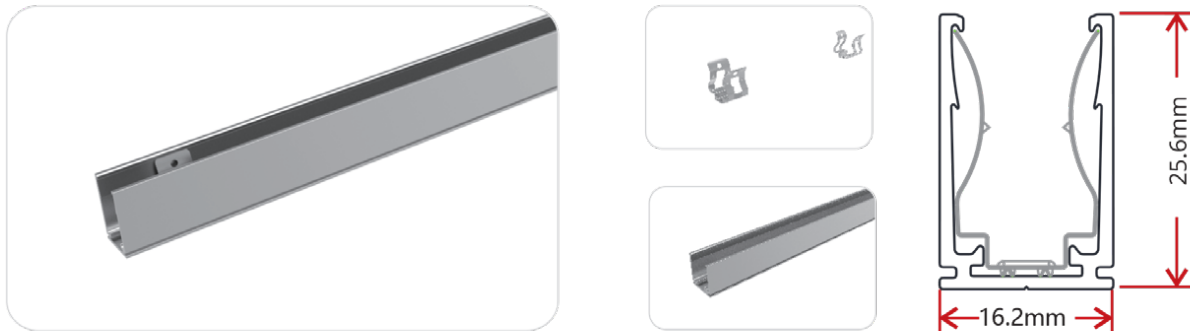
PLASTIC TRACK



W x H	Standard Length	Part Number	L1	L2	Screw Hole Φ	Hole #
0.55 x 0.94in (14 x 24mm)	19.69in (500mm)	TR-11-R-PL-0M5-SD	1.97in (50mm)	7.87in (200mm)	Φ 0.14in (3.5mm)	3
	39.37in (1000mm)	TR-11-R-PL-01M-SD	3.94in (100mm)	7.87in (200mm)	Φ 0.14in (3.5mm)	5
	78.74in (2000mm)	TR-11-R-PL-02M-SD	3.94in (100mm)	7.87in (200mm)	Φ 0.14in (3.5mm)	10

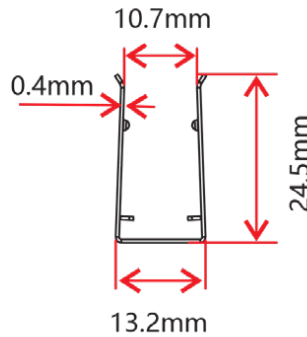
MOUNTING HARDWARE

SPRING CLIP ANODIZED ALUMINUM TRACK

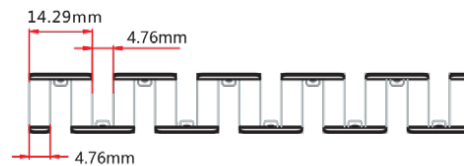
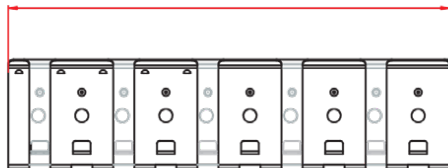


W x H	Standard Length	Part Number	L1	L2	L3	L4	Screw Hole Φ	Hole #	Clip #
0.64 x 1.01in	1.38in (35mm)	TL-11-R-AL-3C5-SP	0.69in (17.5mm)	/	0.2in (5mm)	0.98in (25mm)	$\Phi 0.14$ in (3.5mm)	2	1
16.2 x 25.6mm	19.69in (500mm)	TR-11-R-AL-0M5-SP	0.98in (25mm)	8.86in (225mm)	1.97in (50mm)	7.87in (200mm)	$\Phi 0.14$ in (3.5mm)	3	3
	39.37in (1000mm)	TR-11-R-AL-01M-SP	0.98in (25mm)	9.35in (237.5mm)	3.94in (100mm)	7.87in (200mm)	$\Phi 0.14$ in (3.5mm)	5	5
	78.74in (2000mm)	TR-11-R-AL-02M-SP	0.98in (25mm)	9.6in (243.8mm)	3.94in (100mm)	7.87in (200mm)	$\Phi 0.14$ in (3.5mm)	10	9

STAINLESS STEEL FLEXIBLE CHANNEL

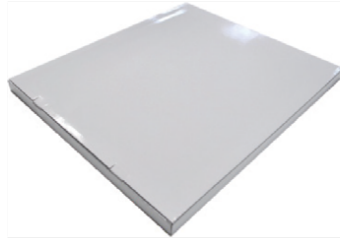
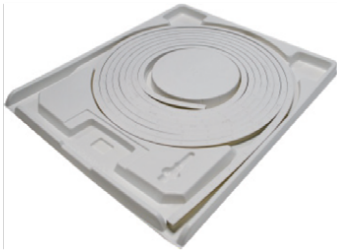


100/300/500/900mm



W x H	Standard Length	Part Number
0.52 x 0.97in	3.94in (100mm)	TR-11-F-SS-0M1-SD
13.2 x 24.5mm	11.81in (300mm)	TR-11-F-SS-0M3-SD
	19.69in (500mm)	TR-11-F-SS-0M5-SD
	35.43in (900mm)	TR-11-F-SS-0M9-SD

This profile can be mounted using screws in any gaps where the channel bends.



White Box



Packing Box



Fixture Length	White Box Dimensions	Packing Box Dimensions	# Of White Boxes	Package Weight
196.85in (5m)	15.35x2.05x19.67in (39x5.2x50cm)	20.47x16.14x11.02in (52x41x28cm)	5	30.86lbs (14kg)
393.7in (10m)	20.08x2.05x24.41in (51x5.2x62cm)	25.2x20.87x11.02in (64x53x28cm)	5	57.32lbs (26kg)
393.7in (10m)	20.08x2.05x24.41in (51x5.2x62cm)	25.2x20.87x6.9in (64x53x17.5cm)	3	35.27lbs (16kg)
787.4in (20m)	26.77x2.05x31.1in (68x5.2x79cm)	31.9x27.56x4.92in (81x70x12.5cm)	2	48.5lbs (22kg)

TESTING

Photometric Data

LED Type	SMD		
Beam Angle	320		
Color	Wavelength	Color	CCT
Red	620-630nm	2700K	2725±145K
Green	520-530nm	3000K	3045±175K
Blue	465-475nm	3500K	3465±245K
Amber	585-595nm	4000K	3985±275K
		4500K	4503±243K
		5000K	5029±283K
		5700K	5669±355K
		6500K	6532±510K

CERTIFICATIONS

	Testing Organization	Certificate Serial N°	Report Reference
UL 2108	UL	20160726-E360029	E360029-2013
CE-EMC	SGS	SZEM1702001259LMV	SZEM160600421302

FIXTURE TESTING

OPTICAL TESTING

Spectrum Analysis	IES LM 79 (Lumen, CCT, CRI, XY, SDCM, wavelength)
Photometric Distribution	IES LM 73 (lumen intensity distribution & Lux diagram)
Lumen Maintenance & Lifetime	IES LM84 & IES TM28

TEMPERATURE TESTING

Normal Temperature Test	UL1598& UL2388 & IEC60598-1 & IEC60598-2-21
Abnormal Operation Test	UL1598 & UL2388 & IEC60598-1 & IEC60598-2-21

DURABILITY TESTING

Bending Test	Manufacturer-defined, 500 cycles
Swing Test	UL2388, >750 cycles
Tensile Test	Manufacturer-defined, > the weight of light in max. connection length double feed
Twist Test	Max connection length double feed Manufacturer-defined, >200 cycles
Ball Impact	UL1598 & UL2388 & IEC60598-1 & IEC60598-2-21
IK07 IK08	IEC62262

ENVIRONMENTAL TESTING

Chlorinated Water Immersion	BG9667, PH6.8-7.6, free chlorine 0.3-0.6mg/L
Salt Water Immersion	IEC60598-1, Salinity 4%
Salt Spray Test	IEC68-2-11
Outdoor Exposure	Manufacturer-defined
Flame Resistance	UL94
UV Exposure	ASTMG 154, ISO 4892-3, UVA@340nm
IPX5 IPX6 IPX7 IPX8	IEC60529
Temperature Shock	Manufacturer-defined, -40°C-60°C (typical temperature range)
Constant Temperature	Manufacturer-defined

CHARTS

ANSI STANDARD

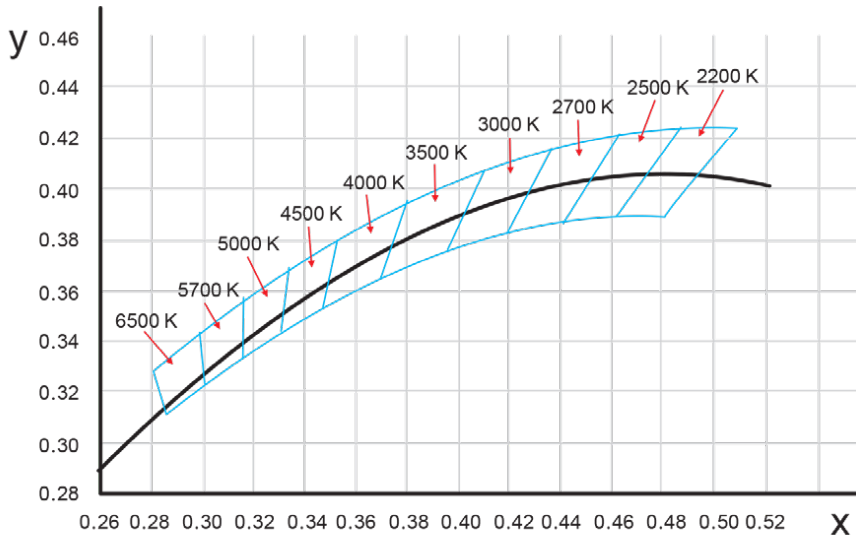
Nominal CCT Categories

Nominal CCT	Target CCT and tolerance(K)	Target D_{uv}	D_{uv} Tolerance Range
2200K	2238 ±102	0.0000	T_x : CCT of the source
2500K	2460 ±120	0.0000	For $T_x < 2870K$
2700K	2725 ±145	0.0000	0.000 ± 0.0060
3000K	3045 ±175	0.0001	For $T_x \geq 2870K$
3500K	3465 ±245	0.0005	$D_{uv}(T_x) \pm 0.0060$
4000K	3985 ±275	0.0010	where
4500K	4503 ±243	0.0015	$D_{uv}(T_x) = 57700 \times (1/T_x)^2$
5000K	5029 ±283	0.0020	-44.6 × (1/T _x)
5700K	5667 ±355	0.0025	+0.00854
6500K	6532 ±510	0.0031	
Flexible CCT (2200-6500K)	$T_F^{1)} \pm \Delta T^{2)}$	$D_{uv} T_F^{3)}$	

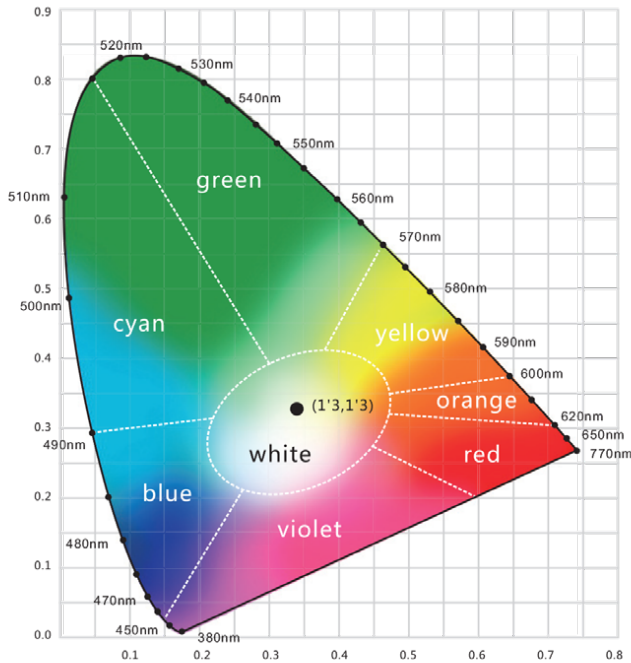
Remark:

- 1) T_F is chosen to be at 100K steps (2300, 2400, ..., 6400K), excluding the ten nominal CCTs listed in Table 1.
- 2) $\Delta T = 1.1900 \times 10^8 \times T^3 - 1.5434 \times 10^4 \times T^2 + 0.7168 \times T - 902.55$
- 3) Same as in the D_{uv} Tolerance Range.

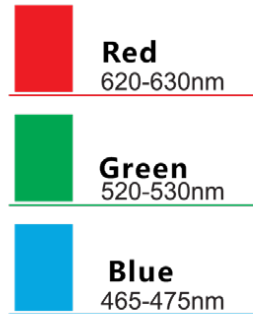
(X,Y) Chromaticity Diagram



CHARTS



Light Color



LOADING CHART

Rated Power	Power Supply									
	35W	60W	75W	80W	100W	120W	150W	185W	240W	320W
2.19W/ft (7.2W/m)	9.84ft (3m)	19.69ft (6m)	24.61ft (7.5m)	26.25ft (8m)	32.81ft (10m)	39.37ft (12m)	49.21ft (15m)	59.06ft (18m)	78.74ft (24m)	98.43ft (30m)
3.66W/ft (12W/m)	6.56ft (2m)	11.48ft (3.5m)	14.76ft (4.5m)	16.4ft (5m)	19.69ft (6m)	22.97ft (7m)	32.81ft (10m)	39.37ft (12m)	45.93ft (14m)	65.62ft (20m)
Lead Type	Single Feed				Double Feed					

Note: These are the max recommended run lengths based on power supply

For example: It is recommended to use one 80W power supply for a single-fed run of 26.25ft (8m) at 2.19W/ft (7.2W/m), or for a single-fed run of 16.4ft (5m) at 3.66W/ft (12W/m).